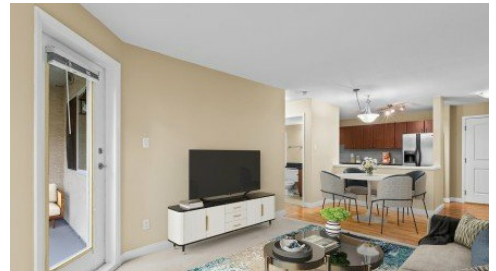


103 - 3063 Immel Street
Abbotsford, BC V2S 4L3

RE/MAX
TRUEPEAK REALTY

Powered by homes.abbynews.com

MLS# R3032614



\$399,000

2 Bedrooms | 2 Bathrooms | 874 Sqft

CLAYBURN RIDGE. East Abbotsford condo. Located close to shopping and schools. 2 bedrooms and 2 full bathrooms. In very good condition. Perfect for 1st time buyers, downsizers or investors. Unit has been staged for pictures and is vacant. Quick possession possible. Open the Virtual tour link on the MLS listing for the floor plan and videos.



John Corrie - CORRIE REAL ESTATE TEAM

Phone: (604) 309-0540

Remax Truepeak Realty

Office: (604) 755-3302

For full listing details, please scan:

