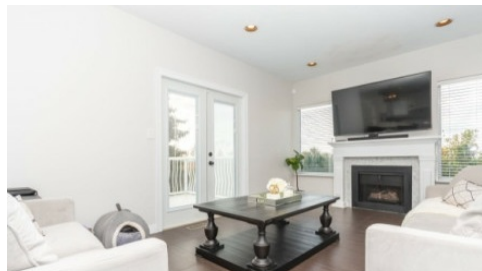


35402 Lethbridge Drive
, Abbotsford East V3G 1J7



Powered by homes.abbynews.com

MLS# R2510952



\$998,013

4 Bedrooms | 4 Bathrooms | 3,007 Sqft

Welcome to your new home in one of Abbotsford's most desirable neighbourhoods, Sandy Hill! This gorgeous home offers 4 bedrooms, 4 bathrooms, 3,007 sq. ft. of living space, a large 8,146 sq. ft. lot, open layout, granite countertops, hardwood floors, wooden cabinets, skylight, gas fireplace, spacious patio, and a well maintained yard. Some updates include air conditioning, new blinds, new furnace, security cameras, smart lights and new mirrors/lights in bathrooms. Downstairs has a large rec room waiting for your ideas, potential for a studio suite, or a 1 bedroom plus den. Breathtaking views of the North Shore Mountains. Located in a quiet, safe neighborhood close to great parks, recreation, schools, walking trails, etc.



Titan Real Estate

Phone: (604) 309-1111

Remax Little Oak Realty

Office: (604) 438-5577

For full listing details, please scan:

